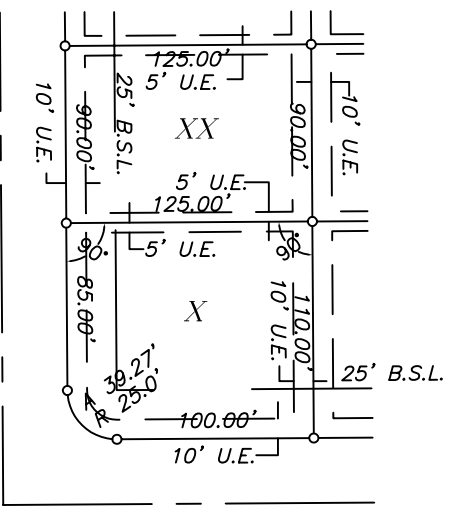
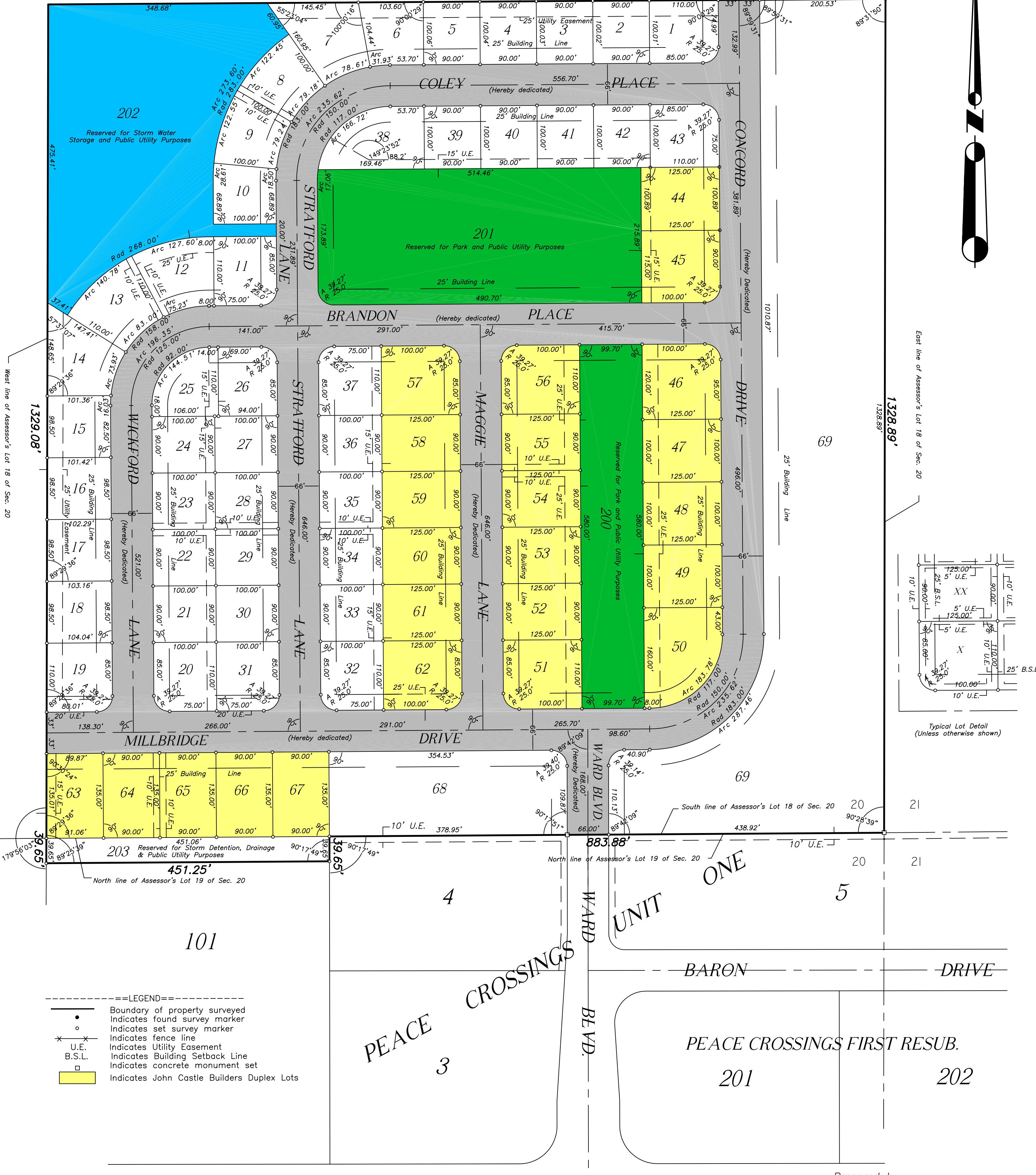


# CAMDEN CROSSING

North line of Assessor's Lot 18 of Sec. 20

1334.26'



East line of Assessor's Lot 18 of Sec. 20

1328.89'

West line of Assessor's Lot 18 of Sec. 20

1329.08'

North line of Assessor's Lot 19 of Sec. 20

101

4

ONE

5

PEACE

3

PEACE CROSSINGS FIRST RESUB.

201

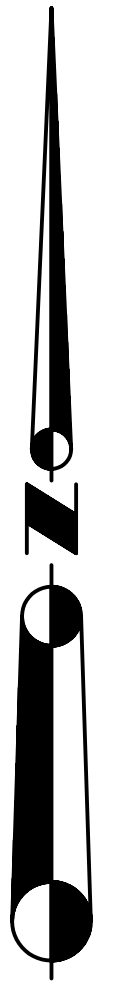
202

Prepared by:  
 William E. Hanna Surveyors  
 License No. 1842807  
 508 Pine Street  
 DeKalb, Illinois 60115  
 (815) 756-2189  
 Fax 748-2532  
 info@hannasurveyors.com ©

PEACE

ROAD

FOR: CASTLE BUILDERS  
 JOB NO. WES 10850



- ==LEGEND==
- Boundary of property surveyed
  - Indicates found survey marker
  - Indicates set survey marker
  - x—x— Indicates fence line
  - U.E. Indicates Utility Easement
  - B.S.L. Indicates Building Setback Line
  - Indicates concrete monument set
  - Indicates John Castle Builders Duplex Lots